



BECOME A PERLISTENER



PERLISTEN™ STANDS FOR PERCEPTUAL LISTENING EXPERIENCE®

WELCOME 2023

Looking back on our first full year of operation, 2022 has been nothing short of truly incredible. We have previously used the word “unanimous” to characterize the initial global reception of our new brand. It is today an evident and a consistent praise throughout the world of audio media, and the industry has positioned our products at the very highest level.

Starting out on our journey, we visualized that we had Mount Everest before us, as symbolically illustrated on our website. At this point, we can proudly conclude that we are well on the way up there and in 2023, we look forward to moving even closer to the summit.

The new year offers new adventures and new opportunities, and we are proud to announce that we will be present at all major audio exhibitions. PERLISTEN will be an established presence on every single continent. As always, the audiophile calendar begins with the Las Vegas Consumer Electronics Show, where we join industry leaders in the introduction of new cutting-edge technologies, presented on a full scale PERLISTEN sound system.

Our tireless globetrotting will continue throughout the calendar year, encompassing ISE in Barcelona, The High-End Show in Munich and CEDIA in Denver. Stay tuned for further details and keep up to date by subscribing to our mailing list on our website. We look forward to meeting partners and friends of the brand from all over the world. See you soon.

THE PERCEPTUAL LISTENING EXPERIENCE®

Created by audiophile engineers and experienced senior managers with extensive experience (150 years) at some of the world's most respected audio companies, PERLISTEN has quickly distinguished itself by implementing proprietary designs and technologies to enhance the total listening experience. PERLISTEN's global footprint encompasses the company's research and development and management team based in Europe, North America, and Asia.

We have successfully and swiftly established a brand presence that is truly unique in the global home audio marketplace. This is confirmed by the simple fact that the entire audio industry has unanimously praised our products with sublime reviews and recommendations with numerous Best of the Year Awards.

There is a high level of innovative design implemented in our products, including numerous patented technologies, including further design innovations currently awaiting patent approval. Read more about our technologies in the following pages. Every product which we have designed carries the THX seal of approval and we are proud to announce that we currently have more than 25 certified products and were the first brand ever to achieve the highest THX Certified Dominus approval.

At the most recent CEDIA exhibition in Dallas, we launched our new S and R Series of in-wall and on-wall architectural speakers. Our entry into the custom installation market adds an expanded dimension to our business. We can only encourage all our partners to get involved in this business segment, which truly represents significant new opportunities. By the Summer of 2023, we will introduce additional products in this category, to bring new clients the enhanced, full PERLISTEN perceptual listening experience.

Globally, we are currently active in more than 30 countries, including all major markets. Our partners represent some of the finest audio brands available and PERLISTEN proudly joins them as a significant part of their product offering. We make a commitment to support all our partners around the world.

We are also actively investing and expanding in both Asia and Europe. In China, we have one of the most technologically advanced facilities, featuring multiple listening rooms, as well as a complete 40-channel home theater demonstration installation featuring our flagship S Series and six D215s dual-drive, push-pull subwoofers.

Effective December 2021, we have established PERLISTEN Europe, which, in addition to handling European sales, also manages the brand's global marketing strategy. All of these initiatives reflect our serious commitment to the brand and to the long-term future of home audio.

PERLISTEN is so much more than just another new brand, it represents a total re-definition of audiophile culture. I would personally like to highlight one of our recent initiatives which we introduced at the High-End in Munich spring 2022, “Become a Perlistener”. We have created several ongoing activities and invested in comprehensive social media campaigns. “Become a Perlistener” is a central element in all of these activities and stay tuned to see this develop throughout 2023.

The backbone of PERLISTEN is engineering, this, combined with a creative marketing strategy sets the agenda for something extra ordinary. We have great expectations for 2023 and beyond and we will continue to work and support all our partners, dealers and customers around the world. We invite all to “join our family” and to sign up as a charter member.

BECOME PERLISTENER



Lars Johansen CSO



THE JOURNEY

2016-2019

- Official brand definition and PERLISTEN™ birthday April 2016
- Joint Venture with high end manufacturing group
- Advanced R&D and definition of acoustic directions
- THX strategy defined

2020

- Establishing PERLISTEN™ International management team
- First ever product review, China
- Second wave of designs and THX certifications
- Commence production of i.e. S7t and D215s
- Trademarks and patents registrations
- PERLISTEN™ and THX partnering at Shanghai SAIV HiFi show
- perlistenaudio.com goes live
- World's first THX Dominus products (6) certified
- Confirmation of product designs and acoustic signature

2021

- New improved design of perlistenaudio.com
- First 5 star review from USA
- Signing Distribution agreement for key markets: USA, Germany, UK, Australia
- CES Top Pick Award S7t, Residential Systems USA
- Global visual identity is set
- Multiple global awards
- Established European subsidiary PERLISTEN™ Audio Denmark ApS
- Stereophile USA, superior review and front cover Dec 2021

2022

- World's first to have 25 THX Dominus certified products
- Commence distribution in several core markets
- First European reviews, i.e. Hi-Fi News UK, Stereo Germany
- High End exhibition Munich, Germany
- Introduction of the S5t Tower speaker
- Cedia exhibition Dallas, USA
- Introduction of S-Series and R-Series In Wall speakers
- Double EISA Award winner S Series and D215s
- Editors Choice, AV Forums, S Series Home Theater
- Best of award, Secrets of Home Theater, R Series Home Theater
- Product of the year, Audioholics, Best high-end subwoofer R212s
- Favorite speakers of the year, Twittering Machine, S7t and R7t

2023-

- Innovation award 2023, Heimkino, S Series

The phrase Perceptual Listening® or just PERLISTEN™ has become the new established benchmark for excellence within custom installation, home music and movie experience.

WORLD'S FIRST THX[®] CERTIFIED DOMINUS IN-WALL SPEAKERS



THX
CERTIFIED



DOMINUS

IN-WALL SPEAKERS

TAKING A MAJOR STEP FORWARD, EXPANDING THE PRODUCT OFFER- ING WITH TWO COMPLETELY NEW IN-WALL SPEAKER SERIES

Introducing an in-wall family built like no other, extruded aluminum back boxes 4 mm thick with the quality of an amplifier chassis, and then lined with a bituminous damping layer to damp vibrations in the enclosure. Fully sealed for consistent frequency response and designed to greatly reduce sound leakage into neighboring rooms while keeping the

sound inside your home theater where it belongs. Utilizing the same drivers and technologies as the in-room speakers, providing the same great sound quality you have come to expect from PERLISTEN.

We welcome the S-Series & R-Series in-wall speakers to the PERLISTEN family.



LISTEN UP!

HERE'S SOME OF THE KEY FEATURES OF THE NEW IN-WALL SPEAKER SERIES

4"

Shallow 4" self-enclosed aluminum cabinet with bituminous damping layer to ensure consistent control of frequency response



Frameless magnetic grilles, ready to paint to suit any home interior designs



Patent-pending Directivity Pattern Control (DPC) waveguide to accurately control vertical and horizontal dispersion



All models utilizing our own proprietary driver design and manufactured in-house



S-Series featuring Beryllium tweeter and our exclusive TPCD carbon fiber ultra-lightweight domes



True acoustic timbre matching across the entire product series



Razor-sharp crossover designs featuring high-grade components with ultra-low tolerances



PERLISTEN
perceptual listening experience

S5i-C

Designed & Engineered in USA - Made in China

THX
CERTIFIED
DOMINUS

4 ohms

IN-WALL SPEAKERS

(S) PRODUCT LINEUP S-SERIES IN-WALL



S7i-LR
Dimensions (HxWxD)
1036.6 x 298.6 x 111.2mm
40.8 x 11.8 x 4.4"

Mounting dimensions (HxWxD)
996 x 257 x 101.7mm
39.2 x 10.1 x 4.0"

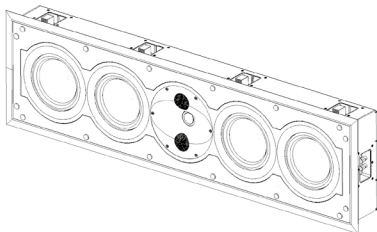
Weight
26.4 kg (58.0 lbs.)



S7i-C
Dimensions (HxWxD)
298.6 x 1036.6 x 111.2mm
11.8 x 40.8 x 4.4"

Mounting dimensions (HxWxD)
257 x 996 x 101.7mm
10.1 x 39.2 x 4.0"

Weight
26.4 kg (58.0 lbs.)



S5i-LR
Dimensions (HxWxD)
665 x 298 x 111mm
26.2 x 11.8 x 4.4"

Mounting dimensions (HxWxD)
624 x 257 x 101.7mm
24.6 x 10.1 x 4.0"

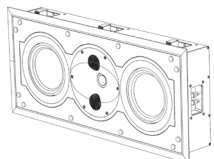
Weight
15.9 kg (35.0 lbs.)



S5i-C
Dimensions (HxWxD)
298 x 665 x 111mm
11.8 x 26.2 x 4.4"

Mounting dimensions (HxWxD)
257 x 624 x 101.7mm
10.1 x 24.6 x 4.0"

Weight
15.9 kg (35.0 lbs.)



S4i-LCRS
Dimensions (HxWxD)
479 x 298 x 111mm
18.9 x 11.8 x 4.4"

Mounting dimensions (HxWxD)
438 x 257 x 101.7mm
17.2 x 10.1 x 4.0"

Weight
11.2 kg (24.6 lbs.)

(R) PRODUCT LINEUP R-SERIES IN-WALL



R5i-LR
Dimensions (HxWxD)
665 x 298 x 111mm
26.2 x 11.8 x 4.4"

Mounting dimensions (HxWxD)
624 x 257 x 101.7mm
24.6 x 10.1 x 4.0"

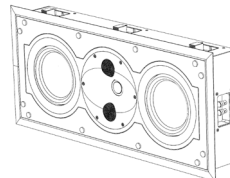
Weight
15.9 kg (35.0 lbs.)



R5i-C
Dimensions (HxWxD)
298 x 665 x 111mm
11.8 x 26.2 x 4.4"

Mounting dimensions (HxWxD)
257 x 624 x 101.7mm
10.1 x 24.6 x 4.0"

Weight
15.9 kg (35.0 lbs.)



R4i-LCRS
Dimensions (HxWxD)
479 x 298 x 111mm
18.9 x 11.8 x 4.4"

Mounting dimensions (HxWxD)
438 x 257 x 101.7mm
17.2 x 10.1 x 4.0"

Weight
11.2 kg (24.6 lbs.)

With Five new models and more to be released soon, this truly confirms our commitment to the custom integration channel and I'm proud that our team can present yet another first with our new flagship in-wall model S7i," says Dan Roemer, chief executive officer, PERLISTEN. "It marks the first time a manufacturer is able to achieve THX Certified Dominus in an in-wall model, especially one designed for the largest private theaters of up to 6,500 cubic feet/184 cubic meters.


Dan Roemer, CEO

THE THX DOMINUS LINE HAS FINALLY BEEN BREACHED!



KEEP READING

James Larson
Audioholics

PERLISTEN™ FUTURE TECH SPEAKERS TODAY

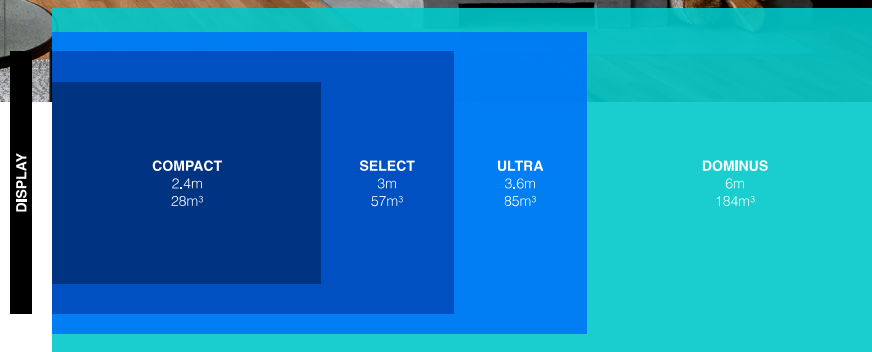
The technology deployed to make PERLISTEN's speakers sound futuristic is matched by their futuristic industrial design too. They have a smooth look that rounds the vertical edges while keeping the horizontal edges more angular. If these are from the future, it is a clean 'Star Trek' future rather than a baroque 'Blade Runner' futurism that has a convoluted and busy aesthetic. They don't look like traditional loudspeakers and

subwoofers, but they do look sleek and very cool. PERLISTEN's products can be had in a wide range of colors, and they are amenable to custom colors as well as some real wood veneers if a customer has a specific request.

Of course, something that looks this nice and also has this level of engineering does not come at a price. Pushing the envelope this far isn't an inexpensive endeavor, and PERLISTEN's flagship tower speaker, the S7t, starts at \$8k each (for

the premium high gloss finish), and their flagship subwoofer, the D215s, starts at \$9k (also in high gloss). However, if you want some of the most sophisticated loudspeakers and subwoofers that are available, in both looks and technology, that is certainly not an unreasonable cost. PERLISTEN products can only be purchased from dealers. They are still establishing a dealer network, so if you are interested in purchasing a PERLISTEN loudspeaker, the way to do that is to contact their distributor, Fidelity Imports,

with queries on where to purchase. PERLISTEN isn't doing direct sales which makes sense since most people buying at this price point do want a demo first. All of their products come backed with a 5-year warranty. We are very intrigued by PERLISTEN's offerings and will be taking a much closer look at their speakers in a full review in the future. Keep an eye on Audioholics to see what we find; is THX Dominus just for bragging rights, or is it the ultimate endgame for home theater?



PERLISTEN™ AUDIO IS THE FIRST AUDIO COMPANY TO BRING THE POWERFUL SOUND OF THX® CERTIFIED DOMINUS SPEAKERS TO HOME THEATERS AROUND THE GLOBE

We started by designing the world-class S7t Tower to challenge some of the best speakers in the world. With the challenge set to create products that are audibly invisible with effortless transients and massive dynamics, this can only be achieved by paying careful attention to every detail. Only then can you compete with the world's finest two-channel

speakers. What is most impressive is the fact that the absolutely minimal level of THD required to achieve this goal is rarely found in even the world's highest ranking speakers. With THD below 0.5% at 90 dB listening levels and rigorous distortion limits at an extreme 120 dB SPL. PERLISTEN can exceed your expectations no matter how you define them.

IN A PERFORMANCE CLASS BY ITSELF

That means quieter whispers, bigger booms, and everything in-between even at a greater distance.

Yes, we developed the THX Certified Dominus performance class to fill the most extensive home theaters with sound, but since we're THX, these new speakers need to be more than just loud. During our rigorous testing process, we pay special attention to distortion levels at high volumes. And with Dominus, we push this to the extreme, subjecting these speakers to 120 dB sound pressure levels where they must keep distortion to a minimum.

Dominus speakers must also be sensitive enough to reach the cinematic THX Reference Level with THX Certified Dominus and certain THX Certified Ultra power amplifiers. We're happy to report that the 92 dB sensitivity requirement for THX Certified Dominus loudspeakers is the most sensitive of any THX loudspeaker category.

The result of the THX Certified Dominus performance class is beastly speakers that produce a massive wall of sound that will immerse everyone in your theater or hi-fi listening room, no matter where they're sitting, in beautiful, distortion-free sound.

NOT JUST GOOD. BUT BEST.



TECHNOLOGY

SPEAKER

BREATHTAKING SOUND

Our most advanced loudspeaker to date! When only the highest fidelity matters most. Featuring our proprietary DPC-Array controlling Mid/High frequencies and centered by our finest 28mm Beryllium dome and dual 28mm TPCD ultra-lightweight domes. All transducers are developed from the ground up by our engineers, based on decades of research and culminating in this world class design. All S-Series speakers share the same DPC-Array and benefit from our unique timbre matching technique. The entire series utilizes our Beryllium dome

tweeters and our advanced Carbon fiber bass/mid drivers. These speakers can be configured as bass reflex or acoustic suspension to meet the demands of any listening room for true full-range performance with unparalleled dynamic range and musical finesse. Our new brand's designs', Dan Roemer told Hi-Fi News. 'Perhaps contrary to perception, there's no formula within the THX spec. to design a speaker, but rather very stringent and difficult performance criteria to meet.' ...

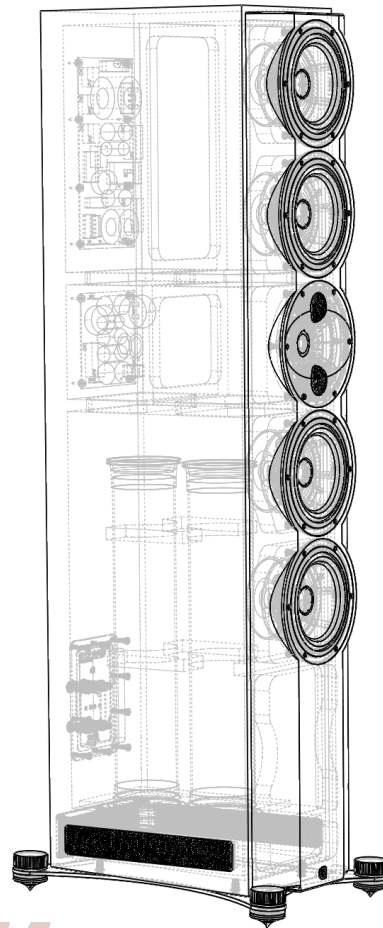
DIRECTIVITY PATTERN CONTROL

DPC (Patent Pending) – We teamed up with companies in the USA and Sweden to bring modern materials technology to hi-fi, utilizing advanced Comsol acoustic modeling. The DPC array is the result of 18 months of painstaking simulations. We just love it and think you will, too.

Beryllium, covering the widest bandwidth up to ultrasonic frequencies, our finest 28mm Beryllium dome takes center stage. Beryllium is one of the strongest materials known to man and does not suffer from the typical harsh break-up modes of other metals due to its outstanding damping characteristics. Accurate, undistorted, and revealing. TPCD Carbon Fiber – The Beryllium tweeter is flanked by our dual 28mm

TPCD ultra-lightweight Carbon fiber midrange domes. Allowing the crossover point to extend more than an octave lower than typical domes, fast, lightweight and without beaming caused by larger diaphragms.

Waveguide lens – all of this technology wouldn't be worth it without the waveguide orchestrating the directional characteristics of the array. Presenting a coherent wavefront, while optimizing early reflections and sound power, to bring vocal reproduction to an altogether new level.



THIN PLY CARBON DIAPHRAGM

The (TPCD) TexTreme carbon fiber used in our midrange drive units is also the key to the performance of our woofers, resulting in lighter-than-air dynamics and the impact you expect in a flagship Speaker that can play down to 20Hz in-room. This technology is 30% lighter than standard carbon fiber of the same thickness, with increased strength from using the unique process of stacking multiple layers. The unique weave is unmistakable and distributes break-up modes without sharp response peaks, while extending bandwidth. Simply perfect.

SUPERIOR QUALITY

It takes more than just world-class materials to make world-class sound. It takes quality that lets you know that your speakers will never fail you in the middle of a dynamic crescendo or when experiencing the delicate subtlety of a triangle in your favorite orchestra. We demand this from our products, so you don't have to.

The DPC array kept revealing more and more advantages as we worked through the design. Power handling, sensitivity, directivity control, transient response, and extremely low THD. The results? Breathtakingly effortless

Erik Wiederholtz, CTO

S PRODUCT LINEUP S-SERIES

Hear what's hidden in the music you love. Effortless dynamics and lightspeed transients the S-Series will reveal layers within the recording that you have never

heard before. The S-Series will reignite that passion for your favorite music catalog.



R PRODUCT LINEUP R-SERIES

You wanted a more affordable option to our flagship S-Series. We've answered with the trickle-down technology found in our new R-Series. Employing the similar DPC array and long-excursion

woofers for extremely low distortion and our beam forming directivity down to 350Hz (R7t) make this a full-range masterpiece only rivaled by our own award-winning S-Series.



TECHNOLOGY

SUBWOOFER

THE APP CONTROL

Bass management is critical to the control the notoriously difficult acoustic environment known as your listening room. Standing waves, subwoofers placed in a less than ideal position, and sound variation from seat to seat are only some of these issues. Control for up to eight subwoofers with three banks of 10 PEQ's

per woofer, Time Delay, Phase, up to six standard EQ's, 24 dB lowpass crossovers and polarity switching, are all tools available to optimize in-room performance. Our app uses Bluetooth Low Energy to communicate with your iOS or Android based devices.



THE MARK OF A PUSH-PULL DESIGN

Every aspect of this woofer was computer-optimized to ensure that every imaginable ounce of performance is achieved and then validated with advanced Klippel test equipment. Starting with the 60mm peak-to-peak tuning of the massive 60mm peak linear excursion, spider compliance, and electromagnetic motor.

The two woofers are then mounted on a massive baffle, reinforced as much as 80mm and operated in push-pull configuration with cancellation of second order harmonics to further reduce distortion every step of the way ensuring the best low frequency experience possible.

1.5 - 3.0 KW OF INTELLIGENCE

At the core of our amps is a 32-bit ARM processor to control innovative technologies like real-time temperature status, current and voltage monitoring, fault detection, and performance diagnostics executed more than 1,000 times per second. All of this to make sure that our 3 kW amplifiers are always in control, even well below 20 Hz.

In addition, we have dual balanced, single-ended inputs with passthrough, 12v trigger, 10-band PEQ and OTA firmware updates via our app to always deliver the latest improvements. The end result is low distortion bass for the finest details with the dynamic range to meet the highest transients without compression and controls at your touch.

We've created the modern subwoofer where sound quality and transients free of overhang are paramount. Our state of the art push-pull design combined with advanced computational control is - Dynamic, Accurate, Solid. There is simply no better expression of bass performance then our push-pull subs.

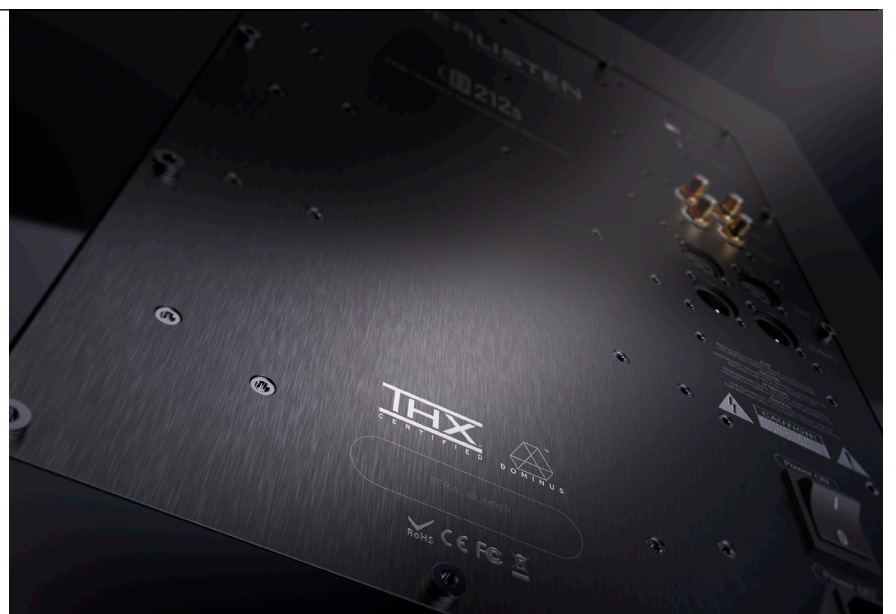

Dan Roemer, CEO



PRODUCT LINEUP SUBWOOFERS

It's all in the details. Dynamic, Accurate, Solid. The audiophile's choice. Where sound quality and Transients free of overhang are paramount. Simply no better expression of bass performance then our push-pull subs. Ground up drivers

developed by our team of engineers. Carbon fiber composite diaphragms, multiple aluminum shorting rings, massive magnets, multi-layer Nomex spiders and lightweight aluminum voice coil wire are the key ingredients



D215s



D212s



D15s



D12s



R212s



R210s

REVIEWS



KEEP READING

YOU MAY HAVE TO **SELL AN ORGAN**

Doug Pyper
AV Forums

With intelligent engineering, exotic materials and exquisite craftsmanship, the Perlisten S-series speakers and D215s subwoofer represent the state of the art in loudspeaker design. This translates into a superlative performance both objectively and subjectively. They are not cheap, but they are, without doubt, among the finest loudspeakers ever produced.

It takes some serious speakers to break the THX Certified Dominus barrier, so how did Perlisten accomplish this feat? The answer is cutting-edge loudspeaker design combined with brute force air displacement. An example of the leading edge technology employed by Perlisten is their 'DPC'



S-SERIES WINS "2023 INNOVATION AWARD"

Heimkino
Germany

We are extremely proud to receive the respected innovation award from Heimkino Germany. Our acoustic signature based on our Patent Pending "Directivity Pattern Control" DPC array is part of the uniqueness in all our speakers. The acknowledgment from Heimkino with their 2023 Innovation award is just additional validation of our brand positioning.

Meet our CTO Erik Wiederholtz who will be present to demonstrate our premium S-Series and D-Series subwoofers ...

array that uses three 1.1" drivers across a waveguide that is used on all of Perlisten's speakers. The 'tweeter' is the dome mounted in the middle of the waveguide while two upper midrange drivers are mounted above and below the mouth of the waveguide ...



WHEN STEREO-PHILE TALKS **PEOPLE LISTEN**

S7t reviewed by Kalman Rubinson
Stereophile, USA

The PERLISTEN S7t reminded me of no other passive speaker that I have heard before. The closest comparisons in my recent memory are both DSP-controlled loudspeakers: the Dutch & Dutch 8c and the Kii Three. What all have in common is their dispersion.

It's rare to find an audio product, let alone a loudspeaker, that is beyond reproach. The S7t is one such loudspeaker. True, it doesn't shake the room, but that's a virtue, not a vice: It has ample bass and plays plenty loud. The result is a system that sounds transparent, producing music not obscured at any listening level.

Overall, the PERLISTEN S7t is the best speaker I've heard in this room. It should be considered by anyone seeking longterm musical satisfaction without practical limitations. New company, new speaker, new world ...

AMONG THE MOST REMARKABLE SPEAKERS **I HAVE EXPERIENCED**

S7t and R7t reviewed by Michael Lavorgna
Twittering Machines, USA

The PERLISTEN S7t are among the most remarkable speakers I've had the pleasure to experience.

Their performance reaches dizzying heights of pure musical energy when fed by remarkable integrated amplifiers like the Constellation Audio Inspiration Integrated 1.0 and Riviera Labs Levante making for musical experiences as rich, rewarding, and captivating as I've had the pleasure to experience in my lifetime.

In 2021 the S7t became part of the absolute Favorite gear list and now in 2022 when reviewed the R7t, I can proudly conclude that I have both models listed on 2022 products of the year list ...



WINNER OF EISA AWARDS 2022-2023

At the recent 40th annual presentation of the EISA Awards by the Expert Imaging and Sound Association, PERLISTEN took first place in two key categories, with the PERLISTEN S loudspeaker series crowned EISA Loudspeaker Series of the Year 2022-2023 and the PERLISTEN D215s subwoofer named EISA Home Theatre Subwoofer of the Year 2022-2023.

After going global during the worst imaginable period in recent history, PERLISTEN has achieved immediate international acclaim and praise, beginning with the banner headline "New Speaker Jumps to the Head of the Line" which graced the front cover of the December, 2021, edition of Stereophile magazine.

In acknowledging the awards, Lars Johansen, PERLISTEN's CSO said, "The EISA Awards are the culmination of extraordinary achievements by our company. The industry has unanimously awarded all of our products countless superior reviews at a level not seen in recent history. Our team has demonstrated superior design and engineering expertise. Kudos to them all."

It should be noted that EISA normally chooses only a single model as Loudspeaker of the Year, but this year for the very first time, they decided to redefine the prize in acknowledgement of the radical achievement, innovation, and creativity of PERLISTEN with the patent pending DPC (Directivity Pattern Control) array found at the heart of every model in both the PERLISTEN S and R-Series. The DPC array's delicate handling and positioning of the most minute of sonic cues is executed with an effortless naturalness that takes resolution to a new level.

The award for the PERLISTEN D215s subwoofer is in itself a recognition of the superiority of the dual-drive Push Pull concept when executed in an uncompromising sealed enclosure.

The EISA Awards are presented by the Expert Imaging and Sound Association, a collaboration formed by Hi-Fi News, Home Cinema Choice, Hi-Fi Choice, Stereophile, Sound & Vision, Shutterbug and AnalogPlanet,

PERLISTEN is short for Perceptual Listening. The company was conceived and organized during the period 2016-2019, releasing their first six products in 2020 and making their worldwide debut in 2021. The principal managers are Daniel Roemer and Lars Johansen, both of whom are audio industry veterans with extensive experience in technical and management positions with various loudspeaker brands PERLISTEN's global footprint encompasses the company's R&D and management team based in Europe, North America, and Asia.

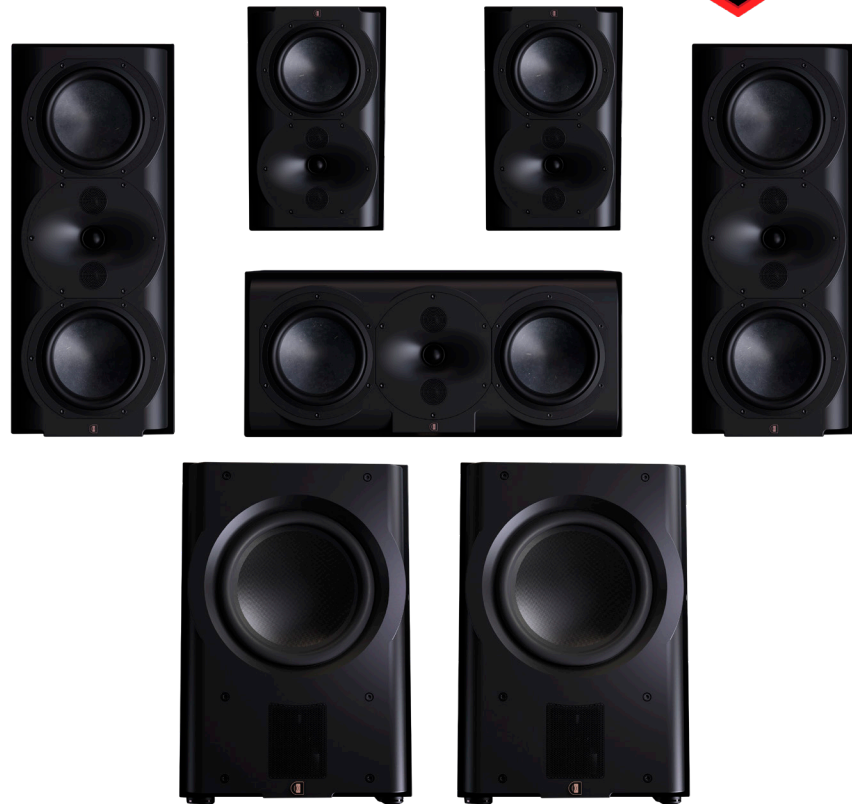
PRECISE, DYNAMIC, YET MUSICAL REPRODUCTION OF SERIOUS CAPACITY

5.2 surround R-Series system
reviewed by Carlo Lo Raso
Secrets of Home Theater and High Fidelity, USA

Perlisten's R5m based surround sound system delivers an over-achieving stereo or multichannel music and movie experience in a more real-world-sized package! If your budget allows, audition these post-haste!

All the speakers and subs are still some of the heaviest and most overbuilt speakers I've seen (or lifted) The R212s subwoofers use dual 12-inch drivers in an uncommon push/pull configuration with a massive amplifier to deliver incredible impact with low distortion Still, some of the best, most dynamic, yet cohesive sound that I have experienced in my home theater.

"When I reviewed PERLISTEN's S7t-based home theater system last year, I was pretty much blown away with what they sent. It was truly an elite system that, realistically, was out of the price range of many. Well ladies and gentlemen, let me introduce you to Perlisten's R-series!" ...



NOT FROM THIS WORLD

S5m reviewed by Tom Frantzen
Stereo, DE

You always wait for it, throughout decades of testing. But in the end, it rarely ever happens: that a test subject impresses you without a shadow of doubt and virtually sends you into euphoria with its tremendous musicality. As you might suspect, it happened again. And the culprit is named „PERLISTEN Signature S5M“. We are blown away!

After a few explicitly fascinating days with these PERLISTEN speakers, I don't really have any more questions, but unfortunately a few more wishes than before. A 5.1 system from PERLISTEN, for example, is now on the list as well. You might be able to tell, there's a merciless itch in places that I absolutely can not afford. And that is a real pity. But wait, maybe I can visit them „at work“, these PERLISTEN speakers. If they are allowed to stay for a while. Because this is an absolutely unforgettable experience ...



BEST HIGH-END SUBWOOFER

R212s reviewed by James Larson
Audioholics, USA

For those subwoofer shoppers who aren't as constrained by a tight budget, we spent time with a real treat this year in the Perlisten R212s. It is not a cheap sub, but what buyers get is a sub that has no shortcomings. The R212s is an ultra-linear subwoofer that pumps out tightly controlled soundwaves that are nearly a one-to-one match with the input signal. It adds or subtracts nothing. It can produce about as much dynamic range may be physically

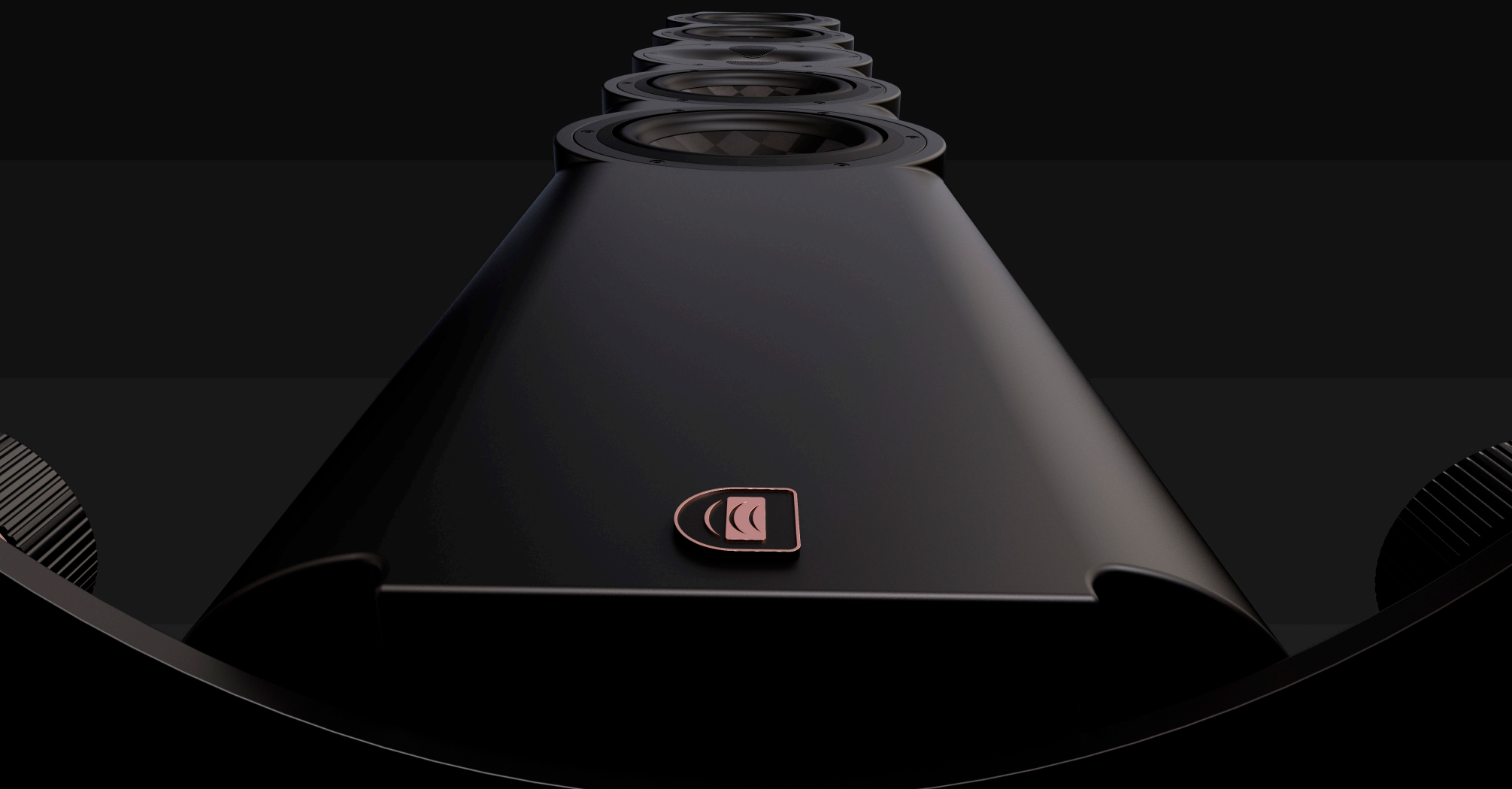
possible from its medium-sized cabinet. It uses a 1.3kW amplifier to power two extremely high-performance 12" drivers in a unique push-pull configuration with dramatically lowers harmonic distortion. Powerful digital signal processing monitors a multitude of parameters in real-time to ensure strictly accurate sound reproduction. It boasts what may be the most advanced feature-set of any sub with extensive controls that are granted to the user via a smartphone app or a top-mounted LCD touch-screen display ...



"NEW COMPANY. NEW SPEAKER. NEW WORLD."

Kalman Rubinson Stereophile, December 2021

stereophile
RECOMMENDED
2022 COMPONENT
CLASS A



PERLISTENTM
PERCEPTUAL LISTENING EXPERIENCE

PERLISTENAUDIO.COM